



Australian Government

Office of Spatial Data Management

Governance and coordination to expedite interoperability in the Australian Government

John R. Busby

**General Manager
Australian Government —
Office of Spatial Data Management**

The WHY? question

Just because we can do all
this stuff ...

Why do we bother and
(more importantly)
why would we divert
resources to it?

Drivers

- Governments, industry and the community demand integrated solutions to complex problems → sustainability and triple bottom line
- Individual agencies can no longer provide all the answers → premium on inter-agency and inter-jurisdictional collaboration
- Recognition that the legacy of project-based activities has been lost data, information & corporate knowledge

The Response ...

... requires 'whole-of-enterprise' coordination, collaboration and inter-operation

If the answer is so obvious - why the problem?

- Poor agency and jurisdictional coordination
- Awkward user/provider relationships
- Existing data is difficult to discover
- Confusing policies on data access and use
- Difficulties in assessing 'fitness-for-purpose'
- Inefficient use of current technologies

But there is an even bigger problem ...

Executive management has difficulty in articulating requirements because ...

- They don't know what is possible
- They don't know how long it will take and what it will cost
- They are uncomfortable with the technology

We need to focus on

- Governance and partnership building
- Improving access to data
- Documenting data quality
- Interoperability (across agencies and themes)
- Integratability (everything fits together!)

Progress is being made ...

Within the Australian Government

- All-hazards approach to emergency management and counter-terrorism (AGSINS)
- Australian Ocean Data Centre Joint Facility
- Oceans Portal (NOO)

With other collaborators

- AusDIN, CRC SI Demonstrator, ICSM HDM, SEEGrid, SIDP, ...

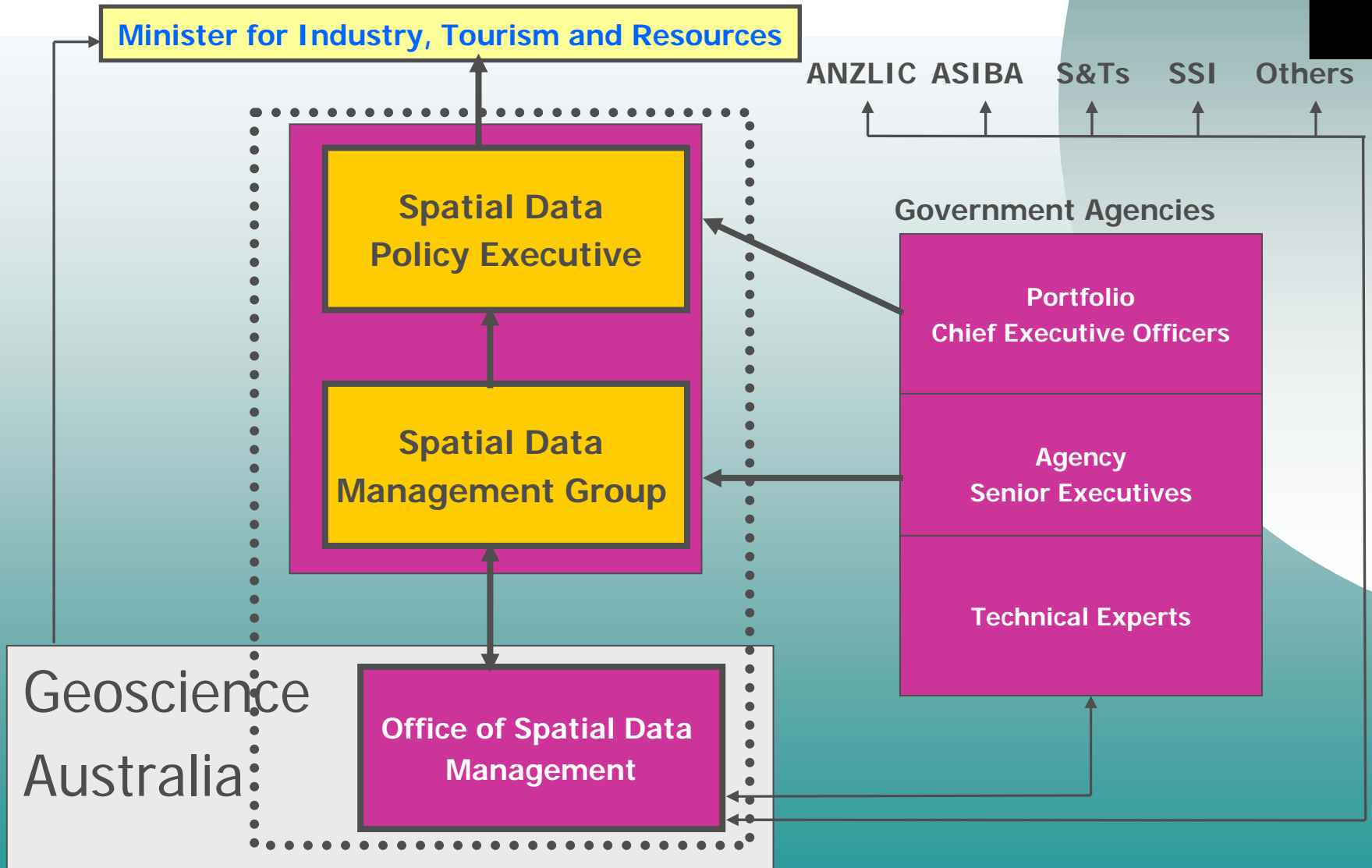


Spatial Data Coordination in the Australian Government

Spatial Data Access & Pricing Policy

- Cabinet Decision – September 2001
- Whole-of-government approach to lowering the barriers to access and use of spatial data

Policy coordination



OSDM role

- Implement the policies and actions decided by the SDPE and SDMG
- Manage the work-plan and SDMG working groups
- Facilitate sharing of experience and expertise amongst Australian Government agencies
- Coordinate with other jurisdictions (through ANZLIC) and other informatics initiatives

Actions

- SDMG and working groups – encourage interagency cooperation
- 'Important' datasets added to Schedule
- Raise awareness of custodianship rights & responsibilities
- Implement data access policy & data licenses
- Metadata profile - data discovery and use
- Standards - especially for interoperability

Recent Achievements

- Schedule – 291 datasets (77% hyperlinked)
- Data Audit – benchmarking using ASDI criteria
- Single Licence and OSDM Licence Registration Service
- Profile of 19115 Spatial Metadata Standard
- Interoperability and Metadata Workshops
- 31 agencies represented on SDMG

External cooperation

National

- ANZLIC – the Spatial Information Council
 - chair of SDPE represents Australian Government
 - whole-of-govt brief to Australian Govt Rep.
 - support for SDI Standing Committee
 - support *Australian Spatial Data Infrastructure*

States & Territories

- LIST, QSIIS, WALIS, ...
 - Peer-to-peer collaboration



- [⊕ OSDM Home](#)
- [⊕ About OSDM](#)
- [⊕ Committees](#)
- [⊕ Data Policy](#)
- [⊕ Schedule](#)
- [⊕ Spatial Data](#)
- [⊕ Resources](#)
- [⊕ Members Only](#)

Welcome to the OSDM Website

The Australian Government Office of Spatial Data Management (OSDM) is charged with implementing the Australian Government's [Spatial Data Access and Pricing Policy](#).

The Policy outlines new coordination arrangements:

- the Spatial Data Policy Executive (SDPE)
- the Spatial Data Management Group (SDMG)
- the Office of Spatial Data Management (OSDM)

We welcome your [feedback](#) on any aspect of this site.

<http://www.osdm.gov.au/>